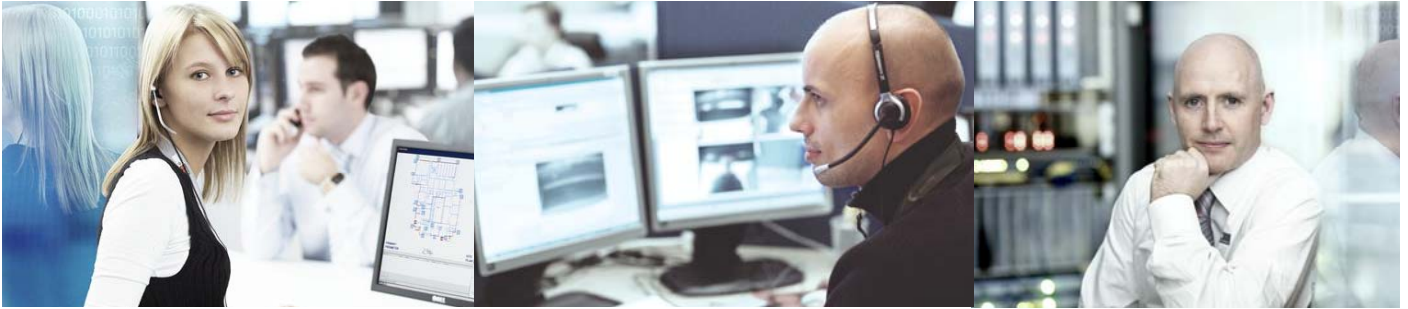


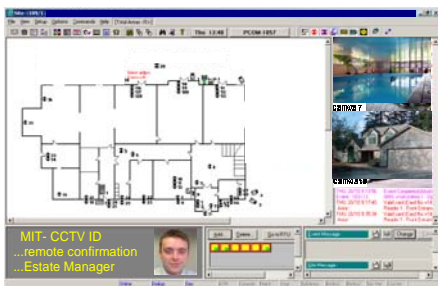
# Niscayah - MIT\*



➤ **Providing flexible, customer-driven, UK-based solutions - wherever in the world you may operate**

➤ **The Niscayah Management Centre is located within the company's corporate headquarters in London**

➤ **MIT operates 24/7, supporting Niscayah's innovative approach to customer service**



### Core services include:

- Alarm Monitoring
- Remote Diagnostics
- Access Control Management
- Card Production Bureau
- CCTV Management
- Lone/remote Workers' Support



*Niscayah is a founding sponsor of:*



[www.camerawatch.org.uk](http://www.camerawatch.org.uk)



For further information on **\*Managed Information Technologies**  
 Contact Darren Riddell or Mark Singh  
 Tel: 020 8477 7534 Email: [mit@niscayah.co.uk](mailto:mit@niscayah.co.uk)  
[www.niscayah.co.uk](http://www.niscayah.co.uk)